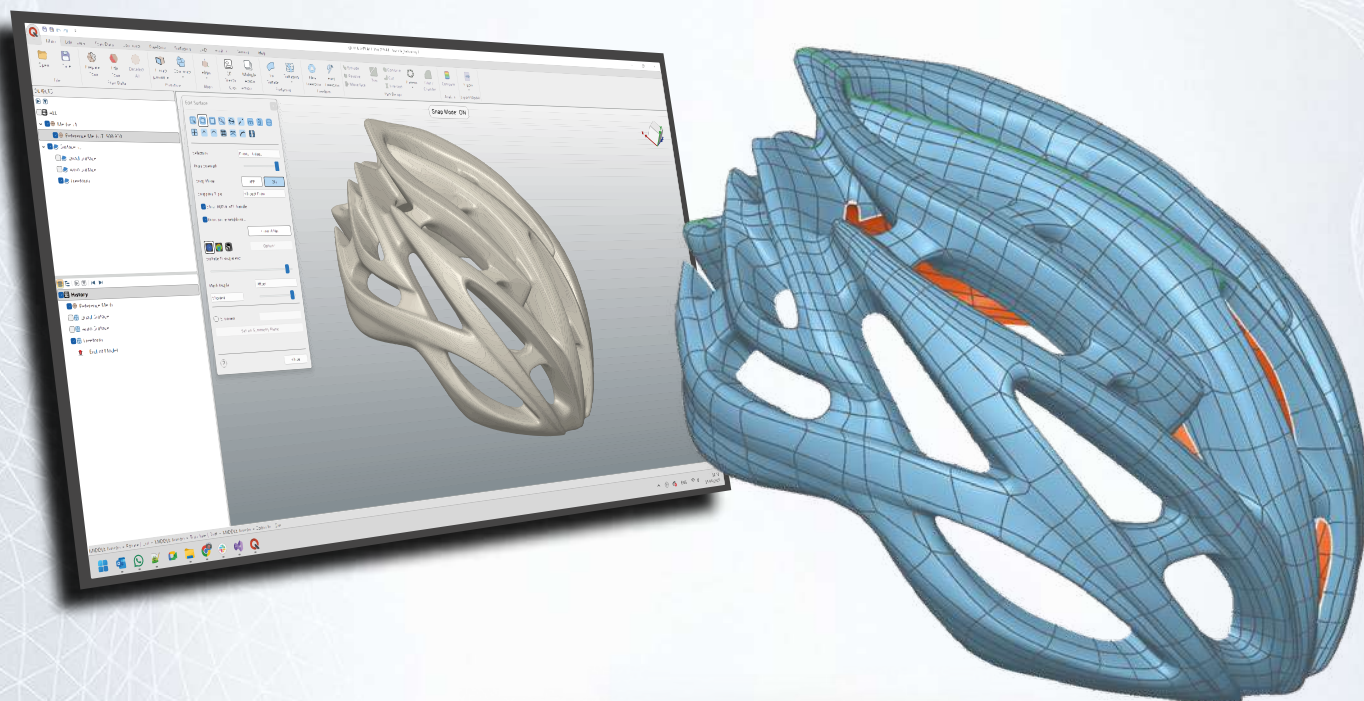




# QUICKsurface

From 3D Scan to CAD – Trusted, Simple, Powerful



**The bridge between  
3D scanning and manufacturing!**



[www.quicksurface.com](http://www.quicksurface.com)

QUICKSURFACE is professional, powerful, and intuitive reverse engineering software that transforms 3D scan data into precise, manufacturable CAD models. Created for engineers and designers, it delivers the speed, accuracy, and reliability demanded by industry leaders - without unnecessary complexity.

### Equipped with a Full Feature Set

QUICKSURFACE gives engineers and designers everything needed to turn scan data into complete, manufacturable CAD models. A full professional toolset for real-world engineering

### Accurate Alignment

Align scan data by features, scan-to-scan, or scan-to-CAD. Robust alignment tools ensure precision and prevent costly errors.

### 3D Sketching, Surface Fitting, Flattening

Sketch directly on scan data, fit surfaces to meshes, and flatten complex geometry. Turn scans into clean, editable CAD with ease.

### Fully Parametric Hybrid Modelling

Combine parametric accuracy with freeform flexibility. The hybrid environment makes building, modifying, and refining CAD effortless.

### Precise Free-Form and Automatic Surfacing

Whether you need exact free-form shapes or fast, automated surfacing, QUICKSURFACE delivers the best of both worlds ensuring every surface is production-ready.

### Advanced Modelling Tools

Access tools like roll/unroll, helix, draft, move face, loft, blend, shell, and thicken. High-end CAD operations at your fingertips.

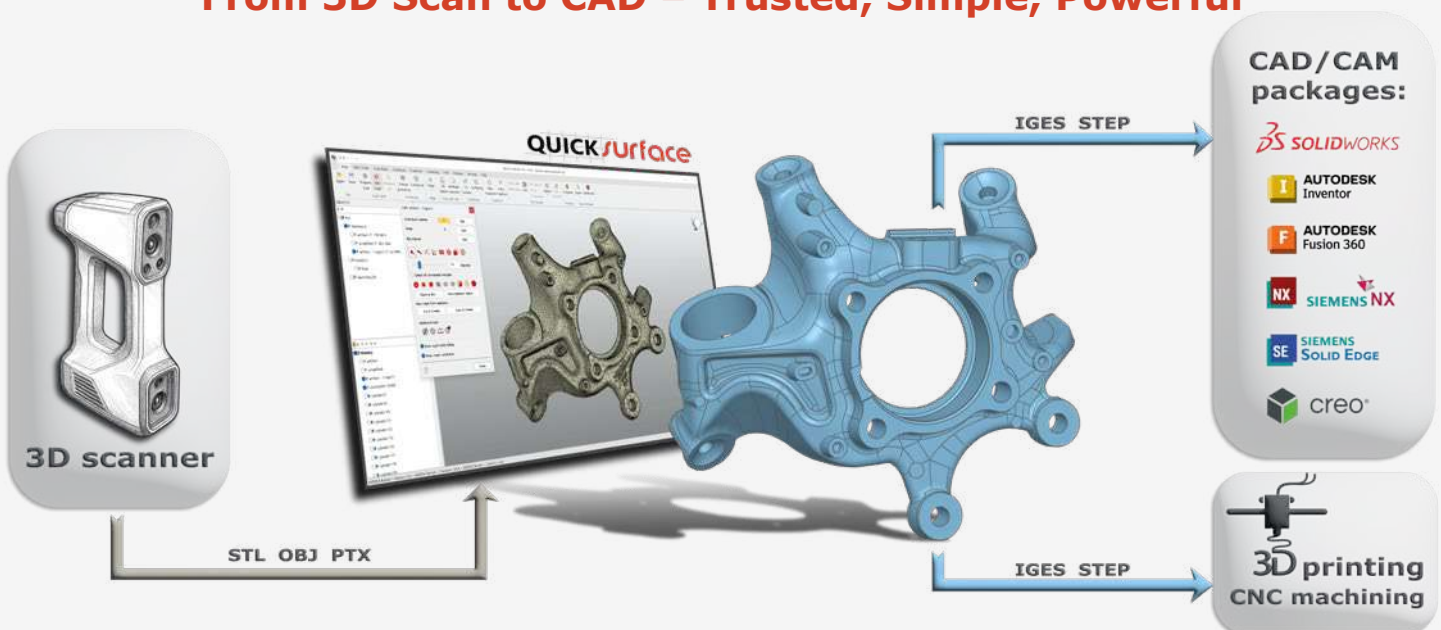
### Real-Time Deviation Control

Stay in control throughout the process with real-time deviation analysis. Instantly detect and resolve potential issues, ensuring accuracy before moving to production.

### Responsive Support and Rapid Development

Our team listens and adapts. Fast support and continuous updates keep QUICKSURFACE ahead of industry needs.

## From 3D Scan to CAD – Trusted, Simple, Powerful



**Save more than 50% on time and effort using QUICKSURFACE AI powered tools for fast product design.**

# 3D Reverse Engineering Process



Object



3D Scan



QUICKSURFACE



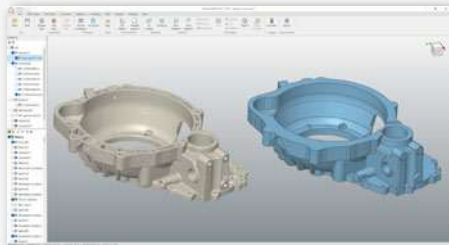
CAD Model



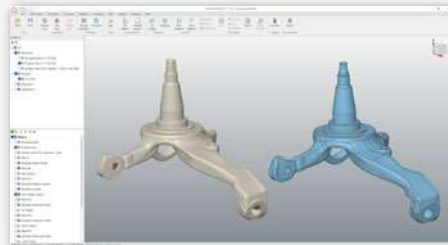
Manufacture

*3D Reverse Engineering is a powerful way to create digital designs from a physical part.*

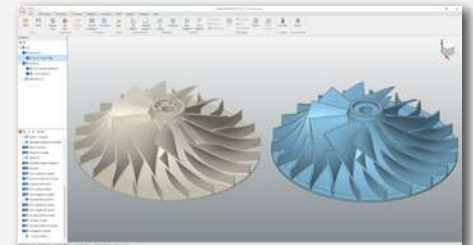
**The industry's most powerful and easy-to-use software for transforming 3D scans into precise, manufacturable CAD**



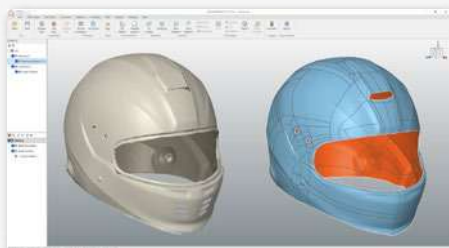
*Parametric model using standard primitives*



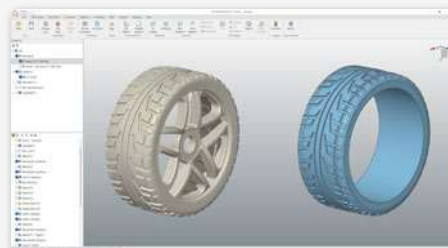
*Hybrid modelling using standard primitives & automatic free form modelling*



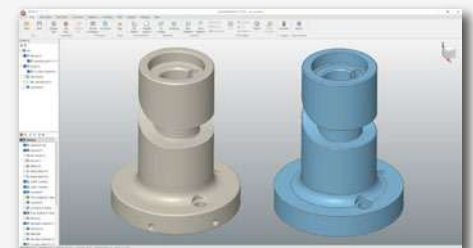
*Standard primitives plus loft, fit surface, trimming and circular pattern*



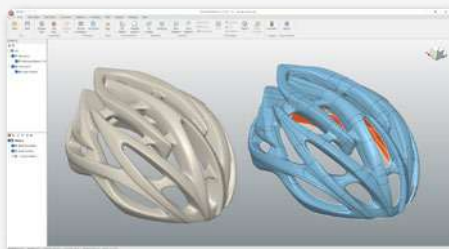
*Manual precise free form modelling*



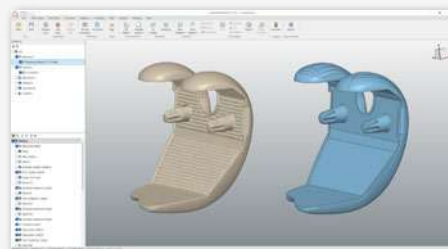
*Roll/Unroll, 2D Sketching, Loft, Revolved, Patterning and Trimming*



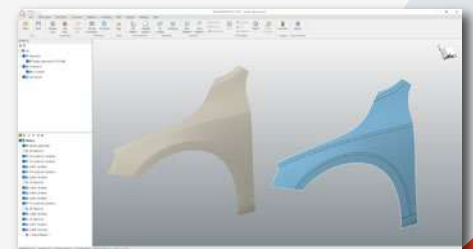
*Roll-Unroll of the mesh and 2D sketches*



*Automatic free form surfacing*

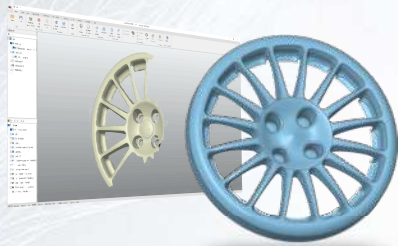


*Hybrid modelling using standard primitives and automatic free forms*

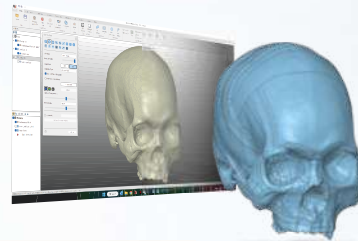


*Fit surfacing and blending*

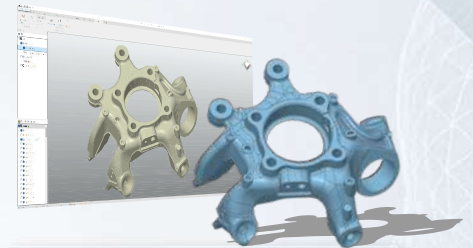
## Applications



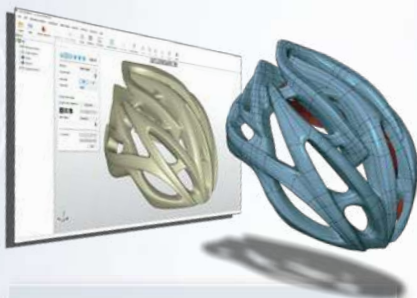
Automotive & Aerospace



Medical and Dental



Mechanical design



Industrial & Product Design



Fashion and Accessories



Arts & Heritage



Speed up your manufacturing process with our 3D Scan-to-CAD solution!



**GoMeasure3D**

Phone: (434) 946-9125

Email: [sales@gomeasure3d.com](mailto:sales@gomeasure3d.com)

[www.gomeasure3d.com](http://www.gomeasure3d.com)